



END STAGE RENAL DISEASE AND THE DISCONTINUATION OF DIALYSIS

Dr. Nicki Apostle
December 8, 2014

Disclosures:

- Nil

CASE STUDY: Mrs. S

- 83 yo F from LTC referred to nephrology for ESRD, poorly controlled pain and pruritus
- PMhx: Htn, type II DM, Afib, CHF, COPD, vascular dementia, PVD, depression, chronic pain
- Pt unable to participate in assessment d/t CI
- Family wishes to help her live as long as she can, be symptom free and maintain current QOL

Objectives:

- Would this patient benefit from a palliative approach to care?
- Will dialysis impart a survival benefit?
- What symptoms may this patient experience and how can they be managed?
- How can you help in advance care planning?
- If this patient were to forgo or discontinue dialysis what can you expect?
 - ▣ The who, how, when and where of discontinuing dialysis

End Stage Renal Disease:

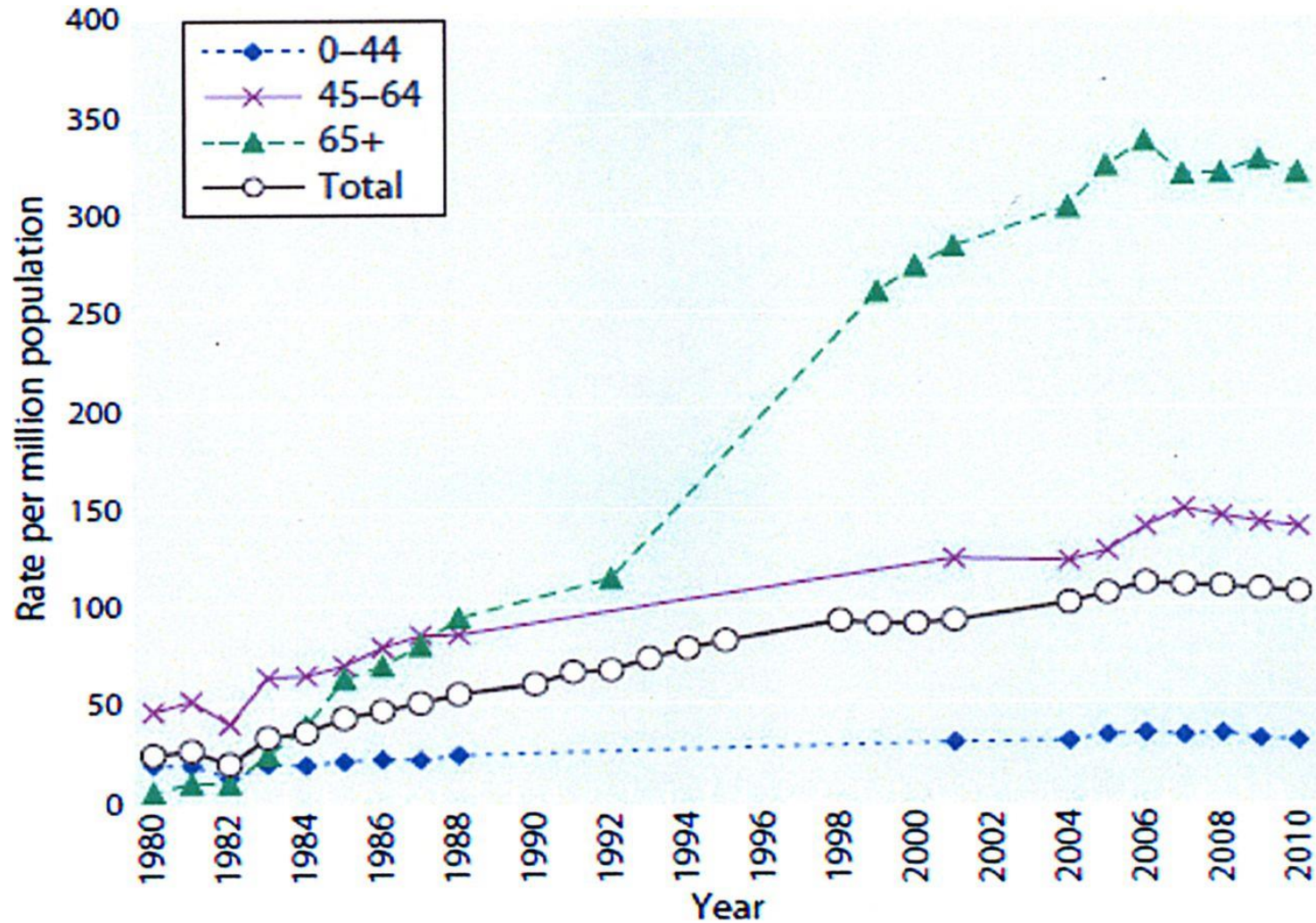
Stage	GFR (ml/min)	Description
1	>90	Normal kidney function, but urine findings, structural abnormalities or genetic trait point to kidney disease
2	60–89	Mildly reduced kidney function, but other findings (as for stage 1) point to kidney disease
3	30–59	Moderately reduced kidney function
4	15–29	Severely reduced kidney function
5	<15	End-stage kidney failure (established renal failure)

GFR = glomerular filtration rate.

End-stage renal disease: Epidemiology and Impact

- ESRD is a serious illness with significant health consequences and high-cost treatment options
- # pts with ESRD has increased 3x in Canada last 20 years with largest cohort of incident dialysis patients being > 65yo
- Critical increase easily attributable to increasing prevalence DM and HTN in an already aging population
- Result is a large subpopulation of unwell, frail, elder dialysis pts with high symptom burden and high health care needs
 - ▣ Estimated 1000 hrs/yr in tx
- Among all dialysis patients, regardless of vintage, yearly mortality is ~25% (>breast, ovarian, prostate, colorectal ca)
- Symptom burden comparable to advanced cancer yet under-recognized and undertreated

Renal Registry data indicating increasing dialysis take-on rates over time by age group



Davison R , and Sheerin N S Postgrad Med J 2014;90:98-105

Identifying Patients: Criteria for a Palliative Care Assessment at the Time of Admission

A potentially life-limiting or life-threatening condition and . . .

Primary Criteria

- The “surprise question”: You would not be surprised if the patient died within 12 months
- Frequent admissions
- Admission for difficult-to-control symptoms
- Complex care requirements
- Decline in function, feeding intolerance, or unintended decline in weight

Secondary Criteria

- Admission from LTC
- Elderly pt, CI, with acute hip fracture
- Metastatic/incurable cancer
- Chronic home oxygen
- Out-of-hospital cardiac arrest
- Enrolled in PCBP or known to palliative care
- Limited social support
- No history of ACP discussions/documents

Identifying patients with palliative care needs:

- Goal is early identifications of pts at high risk for unmet palliative care needs
- Serves as trigger to include a palliative care approach in daily care and consider palliative referral in more complex cases
- High risk patients specific to ESRD include:
 - ▣ Pts with ESRD + any high risk factor (primary or secondary criteria)
 - ▣ Pts with ESRD who have opted for conservative management
 - ▣ Pts with ESRD who are considering discontinuing RRT or have no options for ongoing dialysis access
 - ▣ Pts who are unwell or with high symptom burden at the onset of dialysis

Advanced Care Planning: What?

- Process of shared reflection, discussion and decision making for purpose of clarifying values, tx preferences, and goals of care
- Dynamic process requiring constant reassessment
- Patient-centered approach to individualize care
- Uses open-ended questions
- Provides outcome data + personal opinion
- Ultimate decision for dialysis lies with medical team in taking best interest of pt into account

Advanced Care Planning

Examples of Open-Ended Questions to Promote Discussions

Addressing goals of care when prognosis is uncertain

What are your most important hopes?

What concerns you most about your illness?

What is your quality of life like now?

How do you think about balancing quality of life with length of life?

Is it more important for you to live as long as possible, despite some suffering, or to live without suffering but for a shorter time?

What are your biggest fears?

Given the severity of your illness, what is most important to you to achieve?

What do you understand about your illness?

How much do you want to know?

Advance-care planning and end-of-life issues

Values

What makes life most worth living for you?

Are there circumstances in which you would find life not worth living?

Have you seen or been with someone who had a particularly good (or difficult) death?

What have been the worst and the best things about this illness for you?

Directives

If you are unable to speak for yourself in the future, who would be best able to represent your views and values? (proxy directive)

Have you given any thought to what kinds of treatment you would want or not want if you become unable to speak for yourself in the future? (instruction directive or living will)

Have you considered circumstances in which you would want to stop dialysis?

Where would you like to be and who would you like to be there when you die?

Advanced Care Planning: Why?

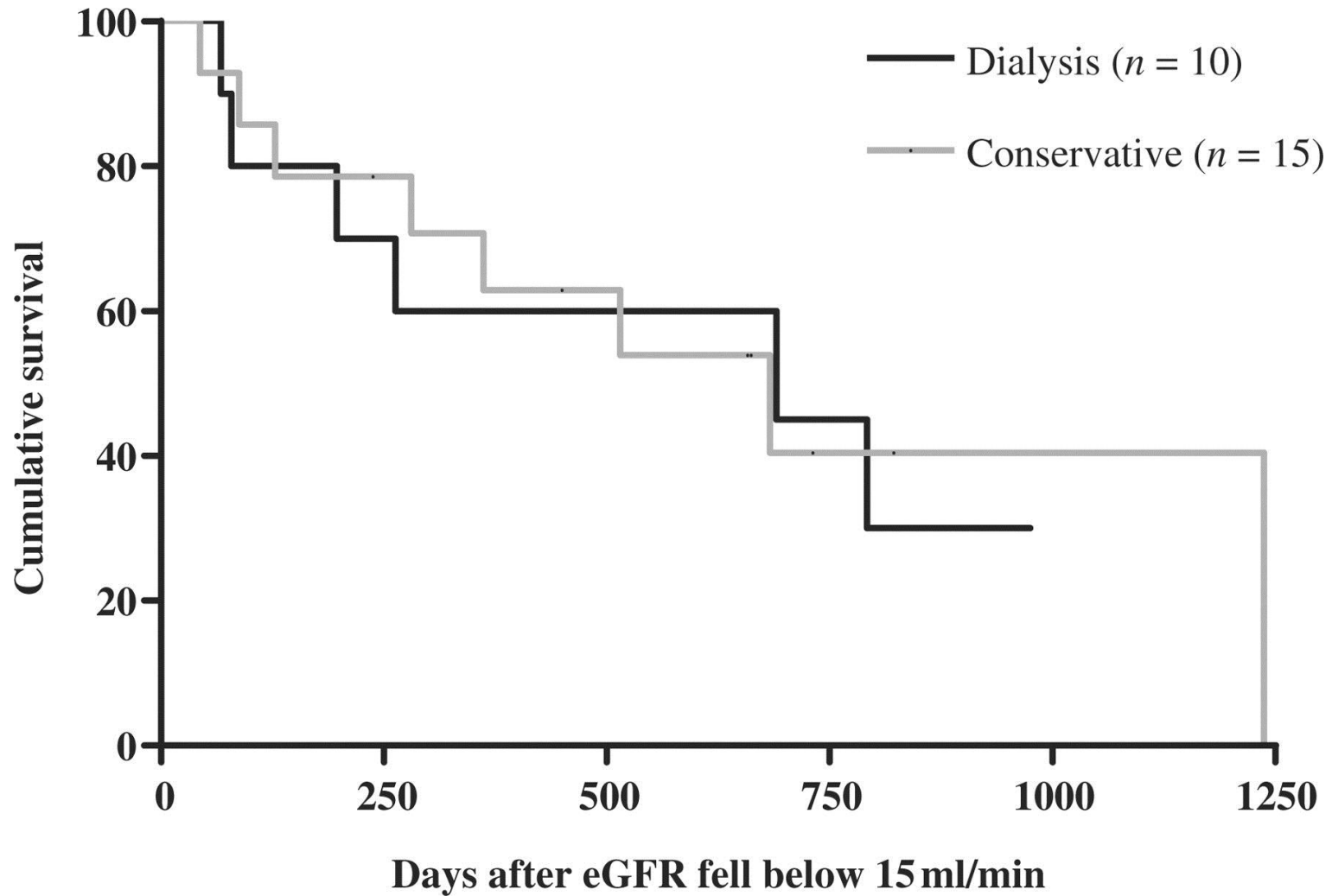
- Advanced care planning has been show to:
 - Increase pt/family satisfaction with care
 - Increase likelihood that pt's wishes will be upheld
 - Increase hospice use, reduce hospitalization and lead to “less aggressive” medical care
 - Decrease stress, anxiety, and depression in surviving relatives
- Only 13-35% pts with ESRD complete ACD
- 61% pts regret decision to start dialysis
- ~73% pts on dialysis have significant or moderate CI and 50-80% who discontinue dialysis are incompetent at the time of decision
- 1-time survey of 100 Canadian pts during an initial visit to a nephrology clinic reported that 97% of pts wanted explicit information on prognosis yet over 90% had no such conversation

Advanced Care Planning in ESRD:

Providing outcome data

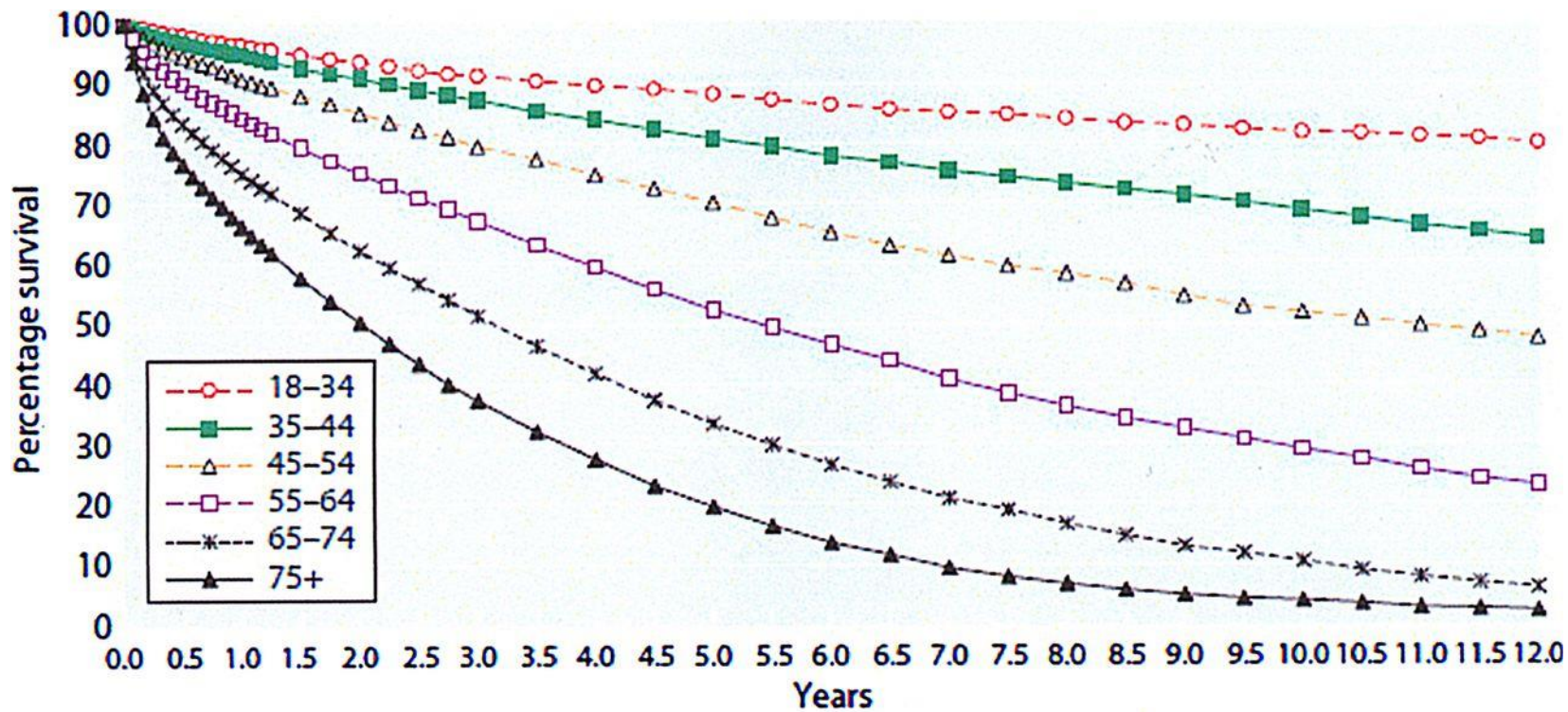
- Largest study to date by Hussain *et al* comparing outcomes in elderly pts choosing between RRT and CM
 - ▣ For pts >80 yo, with a poor performance status or high co-morbidity scores the survival advantage of RRT over CM was lost
 - ▣ Those accessing a CM pathway had greater access to palliative care services and were less likely to be admitted to or die in hospital (47% vs 69%)
- Murtagh *et al* similar results pts >75 yo and high comorbidity scores OR with IHD alone having no added benefit
- Tamura *et al* found that for LTC residents mortality 58% in the first year of dialysis with only 13% maintaining pre-dialysis functional status

Kaplan–Meier survival curves for those with high comorbidity (score = 2), comparing dialysis and conservative groups (log rank statistic <0.001, df 1, P = 0.98).



**Murtagh F E M et al. Nephrol. Dial. Transplant.
2007;22:1955-1962**

Kaplan–Meier survival of incident patients 1997–2009 cohort



Davison R , and Sheerin N S Postgrad Med J 2014;90:98-105



Symptom Burden in ESRD:

- Fatigue 12-97%
- Pain 8-82%
- Pruritus 10-77%
- Dry skin 72%
- Insomnia 20-83%
- Nausea 15-48%
- Anxiety 12-52%
- Depression 5-58%
- Anorexia 25-61%
- Constipation 8-57%
- Muscle cramps 28-60%
- Dyspnea 11-55%
- Headache 18-71%
- Restless legs 8-52%
- QOL 35% lower than age matched healthy population

Uremic pruritis:

- Frustrating, common, and disabling symptom in ESRD
- More common in dialysis (50-90%) vs non-dialysis (25-33%) pts
- Interestingly, not an issue in ARF
- Often generalized but may be localized (back)
- Often worse at night and at end of dialysis
- Pathophysiology multifactorial and poorly understood
- Difficult to treat and may indicate poor prognosis

Uremic Pruritus: Management

- High quality evidence limited
- Trial of topical emollients and analgesic encouraged
- Pharmacological management:
 - ▣ Anti-histamines: lack of evidence but often used, benefit likely d/t sedating properties
 - Hydroxyzine 25 mg qid
 - ▣ Gabapentin: 100 – 300 mg after dialysis (low and slow)
 - ▣ Ondansetron: 4-8 mg tid
 - ▣ Others: Cholestyramine, opioid antagonists (?practical)
- UVB in refractory pruritus
- Renal transplant is definitive tx when possible

Pain:

- One of the most common symptoms in pts with ESRD yet under-recognized and undertreated
- At least 50% of HD pts report pain and 82% of these report pain of moderate to severe intensity
- Dialysis Outcomes and Practice Patterns Study 74% pts reported moderate to severe pain however NO analgesic prescription
- Cohort of Canadian HD pts 75% were found to have a negative Pain Management Index
- Impacts overall QOL, increases use health care system, impairs interpersonal relationships, limits function, increases rates depression, anxiety, insomnia, and increases consideration of discontinuing dialysis

Pain:

- Multifactorial: nociceptive, neuropathic, mixed
- Etiology also multifactorial:
 - ▣ Comorbidities (DM, PVD)
 - ▣ Primary renal disease (PCKD)
 - ▣ Consequences of chronic renal failure (calciphylaxis, renal osteodystrophy)
 - ▣ D/t treatment of ESRD itself (dialysis, procedural)
- MSK pain most common (65%), peripheral neuropathy (15%), procedure-related pain (14%), and pain d/t PVD (10%)

Choice of analgesic in ESRD:

Table 2. Modification of the WHO three-step analgesic ladder for ESRD according to Barakzoy and Moss, 2006 [5].

Renal adaptation of the WHO 3-Step analgesic ladder		
	Recommended drugs	Not recommended drugs
Step 1 Mild pain (1 – 3)	Acetaminophen (paracetamol)	NSAIDs COX-2 inhibitors
Step 2 Moderate pain (4 – 6)	*** Tramadol Hydrocodone Oxycodone (plus acetaminophen)	Codeine
Step 3 Severe pain (7 – 10)	Fentanyl Methadone *** Hydromorphone Oxycodone (plus acetaminophen)	Morphine

Buprenorphine

*** Use carefully in low doses

Pain: Principles of pain management in ESRD

- Need to consider renal clearance of the parent compound and their active metabolites
- Is pt on dialysis?
- For drugs with renal clearance GFR approximates renal excretion and dose reductions required
- Within opioid class, lipophilic drugs such as fentanyl, buprenorphine and methadone preferred in dialysis pts
- More water-soluble molecules such as morphine, hydromorphone and oxycodone are removed by dialysis which can precipitate pain crisis and withdrawal

Neuropathic pain:

- Challenging as many drugs CI or cautioned in ESRD
- Methadone remains favorable however current clinical practices unfortunately limit use
- Most traditional antidepressants and anticonvulsants require dose reductions or avoidance
- Gabapentin: 300 mg/d or pregabalin 75 mg/d
 - ▣ smaller doses often effective
- Nortriptyline: 10-25 mg qHS
- Cannabinoids: adjuvant benefits (nausea, appetite) but may be poorly tolerated
- Non-pharmacologic modalities (ice, heat, massage, acupuncture, TENS, PENS, SCS, HTEMS)

HEALTHCARE PROFESSIONALS

BCPRA provides a number of resources for health professionals, including:

[Guidelines, Protocols & Clinical Tools](#)

[Chronic disease management initiatives](#)

[Disaster planning](#)

[Education and fellowships](#)

[End of life resources](#)

[Forms](#)

[Glomerulonephritis \(GN\) network and registry](#)

[Handouts](#)

[Patient database \(PROMIS\) – the Patient Record/Registration and Outcome Management Information System – the renal care community’s clinical information system.](#)

[Pediatric program planning, to support children at high risk for kidney disease and ensure children in all areas of BC have access to care](#)

[Pharmacy & formulary resources, such as a list of essential medications, medication recommendations, and a partnership with community pharmacies](#)

[Provincial patient education strategy](#)

[Research](#)

[Vascular access](#)

[Links to other organizations and resources](#)

IN THIS SECTION

- ▶ [Guidelines, Protocols & Clinical Tools](#)
- ▶ [Disaster Planning](#)
- ▶ [Education and Fellowships](#)
- ▶ [End of Life Resources](#)
- ▶ [Forms](#)
- ▶ [Glomerulonephritis \(GN\) Network and Registry](#)
- ▶ [Handouts](#)
- ▶ [Pharmacy & Formulary](#)
- ▶ [PROMIS Database](#)
- ▶ [Provincial Patient Education Strategy](#)
- ▶ [Research](#)
- ▶ [Vascular Access](#)

Renal Analgesic Brochure

Contents

OPIOIDS

Buprenorphine (BuTrans patch®)	1	CLICK HERE
Codeine Contin® or combination of Acetaminophen-Codeine (Tylenol #2, 3, Empracet-15, Empracet-30®) or combination of ASA-Codeine (282, 292®)	2	CLICK HERE
Fentanyl (Duragesic Patch®)	3	CLICK HERE
Hydromorphone (Dilaudid® and Hydromorph Contin®)	4	CLICK HERE
Methodone	5	CLICK HERE
Morphine (MOS, MS-IR, Statex, MS Contin, M-Eslon®)	6	CLICK HERE
Oxycodone (Supeudol, Oxy-IR, Oxycontin®) or combination of Acetaminophen-Oxycodone (Percocet®) or ASA-Oxycodone (Percodan®)	7	CLICK HERE
Tramadol (Ultram®) Tramadol CR (Zytram XL®), Tramadol ER (Ralliva® and Tridural®) or combination of Acetaminophen 325 mg and Tramadol 37.5 mg (Tramacet®)	8	CLICK HERE

NON OPIOIDS

Acetaminophen (Tylenol®)	9	CLICK HERE
Non-steroidal anti-inflammatory drugs (NSAIDs) e.g. Ibuprofen (Motrin, Advil®), Diclofenac (Voltaren®), Naproxen (Naprosyn®), COX-2 inhibitors e.g. Celecoxib (Celebrex®)	10	CLICK HERE

ANTICONVULSANTS

Gabapentin (Neurontin®)	11	CLICK HERE
Pregabalin (Lyrica®)	12	CLICK HERE
Topiramate (Topamax®)	13	CLICK HERE
Tricyclic Antidepressants e.g. Amitriptyline (Elavil®), Desipramine (Norpramin®), Nortriptyline (Aventyl®)	14	CLICK HERE

ANTIDEPRESSANTS

Duloxetine (Cymbalta®)	15	CLICK HERE
Venlafaxine (Effexor XR®)	16	CLICK HERE

MUSCLE RELAXANTS

Baclofen (Lioresal®)	17	CLICK HERE
Benzodiazepines (e.g. Diazepam (Valium®), Lorazepam (Ativan®), Clonazepam (Rivotril®)	18	CLICK HERE
Tizanidine (Zanaflex®)	19	CLICK HERE

OTHERS

Clonidine (Catapres®)	20	CLICK HERE
Nabilone (Cesamet®)	21	CLICK HERE
Tetrahydrocannabinol Cannabidiol THC-CBD (Sativex®)	22	CLICK HERE

TOPICAL

Diclofenac gel (Voltaren Emulgel®) (Cesamet®)	23	CLICK HERE
Capsaicin cream or ointment (Zostrix®)	24	CLICK HERE
Lidocaine, Prilocaine cream or patch (EMLA®)	25	CLICK HERE

INJECTABLES



Renal Analgesic Brochure

OPIOID

Buprenorphine (BuTrans patch®)

Indications	For moderate pain requiring continuous opioid analgesia.		
Mechanism of Action	Partial agonist of mu receptor.		
Pharmacokinetics	Normal half life 25 to 37 hrs; Extensive hepatic metabolism by CYP 3A4 and potential for drug interactions; 1% excreted unchanged in urine; 27% inactive metabolites excreted in urine.		
Adverse Effects	Opioid associated adverse drug reactions (sedation, respiratory depression, nausea and vomiting, constipation, itchiness); irritation/erythema, pruritus at application site. Risk of accidental overdose when used in acute pain, non-tolerant individuals, or through careless disposal. Might precipitate opioid withdrawal symptoms if administered before other opioid agonist effects have subsided (within 4 hours of short acting opioid or 24 hours after long acting opioid).		
Dosing Guidelines (Normal Renal Function)	Start low and titrate to effect, e.g. 5 mcg/h buprenorphine patch q7d (max. 20 mcg/h q7d). Previous opioid should be tapered over first 12 hrs of buprenorphine as absorption is delayed. Starting dose for non-opioid naive patient: 5 to 10 mcg/h q 7 d. Adequate breakthrough medication should be provided when switching to buprenorphine as predicted doses are sometimes too conservative. Available: transdermal patch.		
Renal Dosing Guidelines	>50 (mL/min)	10 to 50 (mL/min)	<10 (mL/min)
GFR (mL/min)	100%	100%	100%
Supplemental Dose after	IHD		PD
	None		None
Pharmacare Coverage	No		
Cost (30 day supply)	4 patches of Buprenorphine 10 mcg/h patch: \$95.76		

Discontinuing Dialysis: Who?

- Terminology slow to catch up!
- 2nd leading cause of death in dialysis pts ~25% (1st CVS ~50%, 3rd infection ~13%)
- Factors associated with discontinuing dialysis
 - ▣ Women 25% more likely than men
 - ▣ Caucasians 2x more than Asians (lowest) or African-Americans
 - ▣ Age >75
 - ▣ More likely to be living in LTC facilities
 - ▣ Presence of progressive illness (dementia, cancer)
 - ▣ Poor performance status
 - ▣ Lower quality of life scores
 - ▣ Presence of cachexia
 - ▣ Longer duration of dialysis

Discontinuing Dialysis: How?

- Cohen et al: 8 dialysis clinics US and Canada with 137 cases of dialysis cessation
 - 85% had “good” or “very good” deaths
 - 15% had “bad deaths”
 - Pain 40%
 - Agitation 30%
 - Dyspnea 25%
- Others: fatigue, nausea, pruritus, restless legs, myoclonus, muscle twitching and seizures (drug-induced or d/t uremia)
- Research lacking re pts with palliative care involvement but small studies suggest significant decrease in symptom burden

Discontinuing Dialysis: How?

- Dyspnea: fan, opioids, ultrafiltration RARELY required
- Secretions: glycopyrrolate, scopolamine
- Agitation: assure pain and psych issues addressed
 - ▣ Haloperidol, loxapine, methotrimeprazine in reduced doses
 - ▣ Benzodiazepines if intractable and severe
- Pain: same principles of opioid prescribing with consideration to limited PO route (methadone and oxycodone)
- Nausea: uremia-induced mediated by dopamine
 - ▣ Haloperidol 1st line
- Myoclonus, muscle twitching and seizures
 - ▣ Rotate medications where applicable and appropriate
 - ▣ Benzodiazepines effective at treating symptom

Discontinuing Dialysis: When and Where?

- If no residual renal fxn, mean survival 8-10 days but range 1-100 days
- Much longer and less predictable survival in pts with residual renal function (months – years)
- 73% dialysis pts die in hospital vs 33% who chose conservative management pathway
- <15% dialysis pts die in hospice with pts who choose CM are 4x more likely
- Partially explained by relatively rapid EOL trajectory
 - ▣ Average length of time at hospice 1 week and PPS at admission 20%

Summary:

- Critical growing number of unwell pts with ESRD
- End-of life care needs are currently inadequately met
- Morbidity and mortality rates are high
- Effective management strategies exist when appropriate prescribing practices used
- Identifying pts who would benefit from a palliative approach to care is crucial to providing best patient-centered care
- For some pts, not having dialysis is a better option than continuing/initiating
- Dialysis may not improve overall survival and may be detrimental to QOL in elderly patients with multiple medical comorbidities
- WE NEED TO INCORPORATE A PALLIATIVE APPROACH TO CARE MORE

References:

- Chater S, Davison SN, Germain MJ, Cohen LM. Withdrawal from dialysis: a palliative care perspective. *Clin Nephrol.* 2006;66(5):364-372.
- Cohen LM, Germain MJ, Poppel DM. Practical Considerations in Dialysis Withdrawal: "To Have That Option Is a Blessing". *JAMA.* 2009;289:2113-2119.
- Cohen LM, Germain MJ, Poppel DM, Woods AL, Pekow PS, Kjellstrand CM. Dying Well After Discontinuing the Life-Support Treatment of Dialysis. *JAMA Int Med.*2000;160(16):213-2518.
- Davison R, Sheerin NS. Prognosis and management of chronic kidney disease at the end of life. *Postgrad Med J.* 2014;90:98-105.
- Davison SN. End-of-Life Care Preferences and Needs: perceptions of Patients with Chronic Kidney Disease. *CJASN.* 2010;5(2):195-204.
- Davison SN, Ferro CJ. Management of pain in chronic kidney disease. *Progress in Palliative Care.* 2009;17:186-195.
- Dean, M. Opioids in Renal Failure and Dialysis Patients. *J Pain Symptom Manage.* 2004;28:497-504.
- De Castro C, Murphy L, Battistella M: Pain assessment and management in hemodialysis patients. *CAANT J.* 2013;23:29-32.
- Germain MJ, Cohen LM, Davison SN. Withholding and withdrawing dialysis: What we know about how our patients die. *Seminars in dialysis.*2007;20(3);195-199.
- Goldberg, GR, Meier DE: A Swinging Pendulum: comment on "on patient autonomy and physician responsibility in end-of-life care". *Arch Intern Med* 2011;171:854.
- Holley JL. Palliative Care in End-Stage Renal Disease: Illness trajectories, Communication, and Hospice Use. *Advances in Chronic Kidney Disease.*2007;14(4);402-408.

References:

- Kane PM, Vinen K, Murtagh FEM. Palliative care for advanced renal disease: A summary of the evidence and future direction. *Palliative Medicine*. 2013;27(9);817-821.
- Lalovic B, Kharasch E, Hoffer C, Risler L, Liu-Chen LY, Shen DD. Pharmacokinetics and pharmacodynamics of oral oxycodone in healthy human subjects: Role of circulating active metabolites. *Clin Pharmacol Ther* 2006;75:461-479.
- Luckette, T. Advance care planning for adults with CKD: a systematic integrative review. *American Journal of Kidney Diseases* 2014;63: 761-770.
- Murtagh FEM, Addington-Hall J, Higginson IJ. The Prevalence of Symptoms in End-Stage Renal Disease: A Systematic Review. *Advances in Chronic Kindey Disease*. 2007;14(1):82-89.
- Murtagh FEM, Marsh JE, Donohoe P, Ekbal NJ, Sheerin NS, Harris FE. Dialysis or not? A comparative survival study of patients over 75 years with chronic kidney disease stage 5. *Nephrol Dial Transplant*. 2007 22(7):1955-1962.
- O'Connor NR, Kumar P. Conservative management of end-stage renal disease without dialysis: a systematic review. *J Palliat Med* 2012;15(2)228-235.
- Russon L, Mooney A. Palliative and end-of-life care in advanced renal failure. *Clinical Medicine*. 2010.10(3);279-281.
- Santoro D, Satta E, Messina S, Costantino G, Savica V, Bellinghieri G. Pain in end-stage renal disease: a frequent and neglected clinical problem. *Clin Nephrol* 2011;79:S2-S11.
- Tamura MK, Covinsky KE, Chertow GM, Yaffe K, Landefeld CS, McColluch CE. Functional Status of Elderly Adults before and after Initiation of Dialysis. *N Engl J Med*. Oct 15, 2009; 361(16): 1539–1547.
- Weissman DE, Meier DE. Identifying Patients in Need of a Palliative Care Assessment in the Hospital Setting. *J Palliat Med* 2011;14:17-32.
- Yong DS, Kwok AO, Wong DM, Suen MH, Chen WT, Tse DM. Symptom burden and quality of life in end-stage renal disease: a study of 179 patients on dialysis and palliative care. *Palliat Med* 2006;23(2):111-119.